

October, 2016

Sumter County Quarterly Epidemiology Report

Volume 2, Issue 4

Inside this issue:

Thank you	1
Year in Review	1
Food Recalls	1
Flu Season	2
Disease Numbers	3
Epi Quiz	4

Director

Sanford Zelnick, DO MS
(352)569-3138

Assistant Director

Keith Hunter, MPH, CPH
(352)569-3122

Nursing Director

Leah Caldi, RN
(352)569-3108

Environmental Health Manager

Rolland Shrewsbury, RS
(352)569-3134

Administrative Assistant

Sylvia Long
(352)569-3138

Public Health Preparedness Coordinator

Keegan Johnson
(352)569-3137

Epidemiologist

Brittany Becht, MPH, CIC
(352)569-3115

STD, Tuberculosis, HIV/AIDS

Lisa Malone, RN
(352)569-3107

School Health Supervisor

Kathryn Egan, RN
(352)569-3145

Tobacco Coordinator

Theresa Madison, PhD., MSW
(352)569-3146

MRC Program Director

Walter D. Thomas
(352)689-4679

Sumter's 2016 Epidemiology Summary

FDOH Sumter Epidemiology would like to thank all of our partners for their invaluable help during the 2016 reporting year. We would like to take this opportunity to remind our partners that the FDOH Sumter Epidemiology program can provide guidance and diagnostic testing, during certain situations. For information on these services please contact us at **(352)569-3115** or **(352)569-3106**.

During the 2016 reporting year the Florida Department of Health in Sumter County:

- Investigated and reported **502** cases of infectious diseases
- Investigated **23** restaurant related foodborne complaints involving **34** Sumter County Residents
- Investigated **12** outbreaks in various settings including:
 - Skilled Care Centers
 - Restaurants
 - Assisted Living Facilities
 - Correctional Facilities

Thank you again to all of our partners in these efforts.

Special thank you to:

- The Infection Control staff at Central Florida Health Alliance
- Promise Hospital
- Sumter County Fire & EMS
- Medical staff at the Correctional Facilities

Food Recalls



In the last 30 days the following food recalls were issued. More information can be found at, <http://www.floridahealth.gov/>

Brand Names	Food	Date of Recall	Health Risk
Palmer Candy Company	Certain chocolate products	1/10/2017	Salmonella
Hostess Brands, LLC	Limited Edition Holiday White Peppermint Hostess Twinkies	1/9/2017	Salmonella
Publix	Publix Premium Pancake Waffle Mix	12/8/2016	Salmonella
To see more recalls visit www.floridahealth.gov			

2016-2017 Influenza Season

Florida Influenza Activity

According to the week 1 (January 1-7) Florida Flu Review, the state of Florida is currently seeing regional influenza activity. Since the beginning of the 2016-2017 influenza season the Bureau of Public Health Laboratories (BPHL) has been reporting influenza A (H3) as the most common influenza subtype detected in specimens tested at the state laboratories.

State Influenza Activity	Predominately Circulating Strain
 Regional	 A (H3)

National Influenza Activity

Nationally, influenza activity has been increasing in recent weeks. For the third consecutive week, influenza activity levels have been above the national baseline. While influenza seasons vary and are unpredictable, influenza activity is expected to continue to increase in coming weeks. Public health laboratories across the nation report influenza A (H3) as the most common circulating subtype.

Highly Pathogenic Avian Influenza (HPAI) H5

While highly pathogenic avian influenza (HPAI) H5 has not been identified in Florida birds, there is an increased risk during the fall and winter migratory season. Identification of HPAI H5 would be expected to be seen in more northern states first. To date only two wild ducks have tested positive for HPAI H5 in the United States (Alaska and Montana). No human HPAI infections have been reported in Florida or any other state.

To learn more about HPAI, visit www.floridahealth.gov/novelflu.



Prevention

The best way to prevent flu is to get a flu vaccine. As long as flu viruses are circulating, it's not too late to get vaccinated. The CDC recommends use of the inactivated influenza vaccine (IIV) or the recombinant influenza vaccine (RIV). The live attenuated influenza vaccine (LAIV) should not be used during the 2016-2017 influenza season. For more information regarding 2016-2017 influenza vaccination recommendations visit www.cdc.com

Florida Department of Health in Sumter County

Page 3



Reportable Disease Count 2016 Report Year

Disease Category	Sumter			State	
	Cumulative (YTD)			Cumulative (YTD)	
	2016	2015	Expected	2016	2015
B. CNS Diseases & Bacteremias					
H. Influenzae	3	2	3	300	243
Meningococcal Disease	-	-	0	18	24
Strep Pneumoniae, Invasive, Drug Resistant	1	1	1	207	165
Strep Pneumoniae, Invasive, Susceptible	2	1	2	413	265
C. Enteric Infections					
Campylobacteriosis	16	12	17	3619	3638
Cryptosporidiosis	9	6	9	583	872
Escherichia Coli Shiga Toxin +	9	6	9	655	460
Giardiasis	9	5	9	1134	1056
Salmonellosis	21	18	22	6312	6418
Shigellosis	4	6	4	979	2014
Vibriosis (All Reportable Species)	-	1	0	199	199
D. Viral Hepatitis					
Hepatitis A	2	-	2	125	125
Hepatitis B, Acute	4	3	4	676	535
Hepatitis B, Chronic	24	18	25	5097	5484
Hepatitis C, Acute	5	4	5	268	204
Hepatitis C, Chronic	352	233	366	32190	27776
Hepatitis +HBsAg in pregnant women	-	-	0	449	488
E. Vector Borne, Zoonoses					
Post-Exposure Prophylaxis for Rabies (PEP)	20	12	21	3306	3460
Rabid Animals	-	-	0	82	84
Lyme Disease	7	4	7	388	294
Rocky Mountain Spotted Fever	-	-	0	38	43
F. Others					
Carbon Monoxide Poisoning	-	-	0	273	271
Creutzfeldt - Jakob Disease (CJD)	-	2	0	23	30
Legionellosis	6	1	6	379	321

* Mid year population based on 2014 & 2015 est. U.S Census Bureau (<http://quickfacts.census.gov/qfd/states/12/12119.html>)

* Case number based on total number of cases reported during reporting year 2015 & 2016

* Expected rates based on US Census population growth estimates, 2015

EPI Quiz Question



What condition, thought to be caused by elevated cholesterol levels, high blood pressure and cigarette smoking, can result in heart attack or stroke?

(Answer on pg 4.)



**Florida Department of
Health In Sumter County**

415 E Noble Ave
Bushnell, FL 33513

Phone: 352-569-3102

Confidential Fax: 352-512-6555

After Hours Reports: 352-303-6237



(Click here to learn more)



≡ EPI ANALYSIS ≡



Page 4

MISSION :

To protect, promote & improve the health of all people in Florida through integrated state, county, & community efforts.

VISION :

To be the *Healthiest State* in the Nation

VALUES (ICARE) :

Innovation: We search for creative solutions and manage resources wisely.

Collaboration: We use teamwork to achieve common goals & solve problems.

Accountability: We perform with integrity & respect.

Responsiveness: We achieve our mission by serving our customers & engaging our partners.

Excellence: We promote quality outcomes through learning & continuous performance improvement.



Epi Quiz Answer

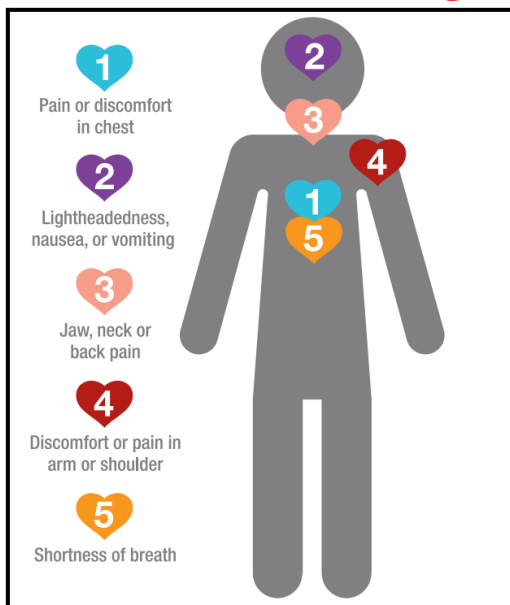


What condition, thought to be caused by elevated cholesterol levels, high blood pressure and cigarette smoking, can result in heart attack or stroke?

Atherosclerosis

Atherosclerosis, a type of arteriosclerosis, is a progressive disease that can start in childhood and is characterized by the build up of plaque inside the arteries. When a piece of plaque breaks off or a thrombus forms on the plaque's surface, blocking the artery, a heart attack or stroke may result.

Heart Attack Warning Signs



Stroke Warning Signs

F	Face Drooping- Does one side of the face drop or is it numb? Is the person's smile uneven?
A	Arm Weakness- Is one arm weak or numb? Does one arm drift downward?
S	Speech Difficulty- Is speech slurred? Is the person unable to speak or hard to understand?
T	Time- Check the time so you'll know when symptoms appeared. Call 9-1-1 immediately.

For more information and facts about Heart Attack and Stroke visit:

www.heart.org or www.strokeassociation.org

